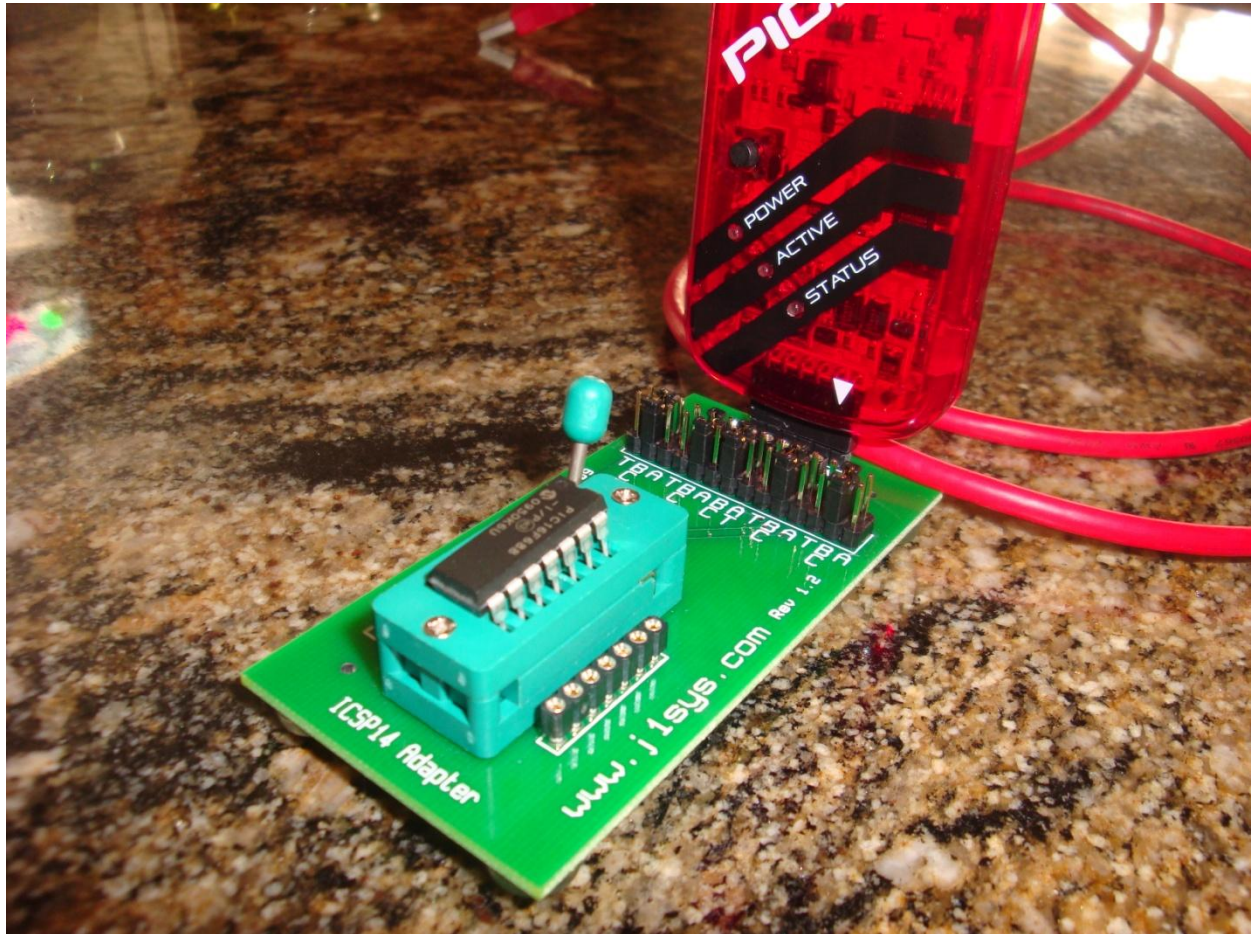


## Programming the PIC16F688

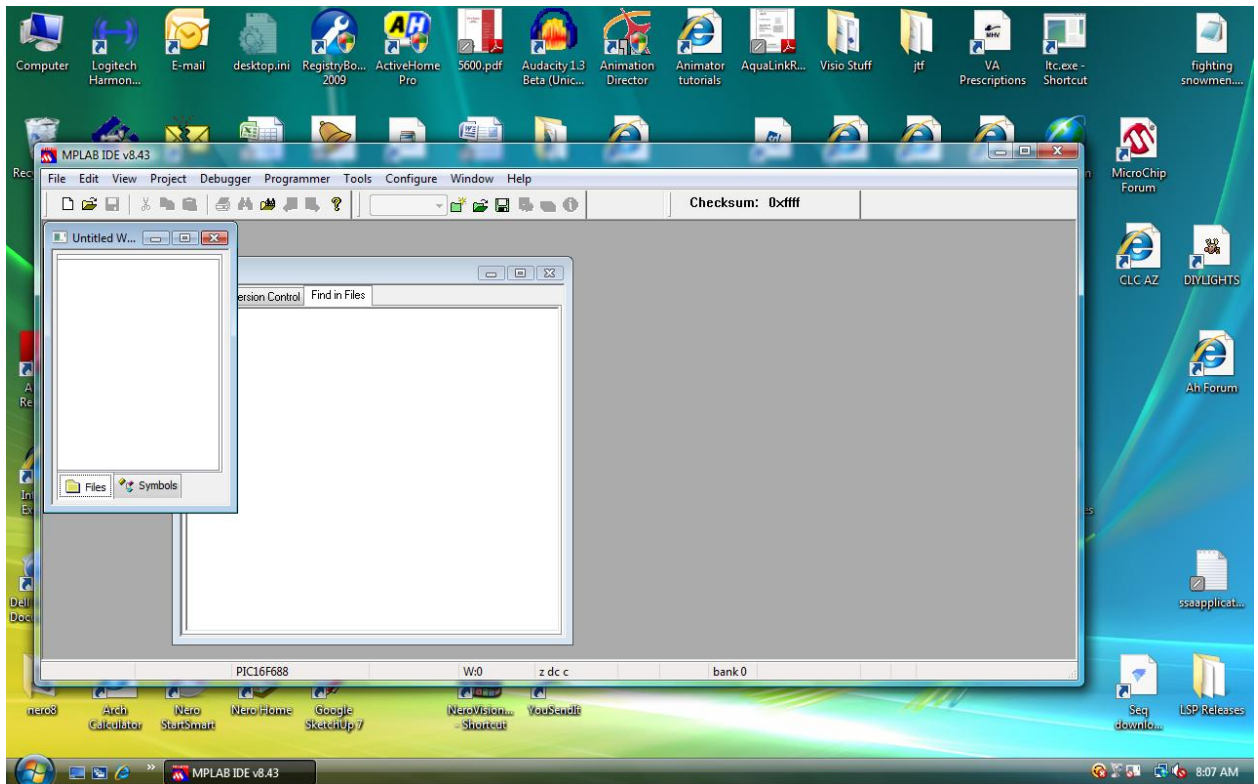
With PICKIT III

This is a picture of the PICKIT 3 attached to the board. Jumpers should be on all the pins labeled “BC” on the board.

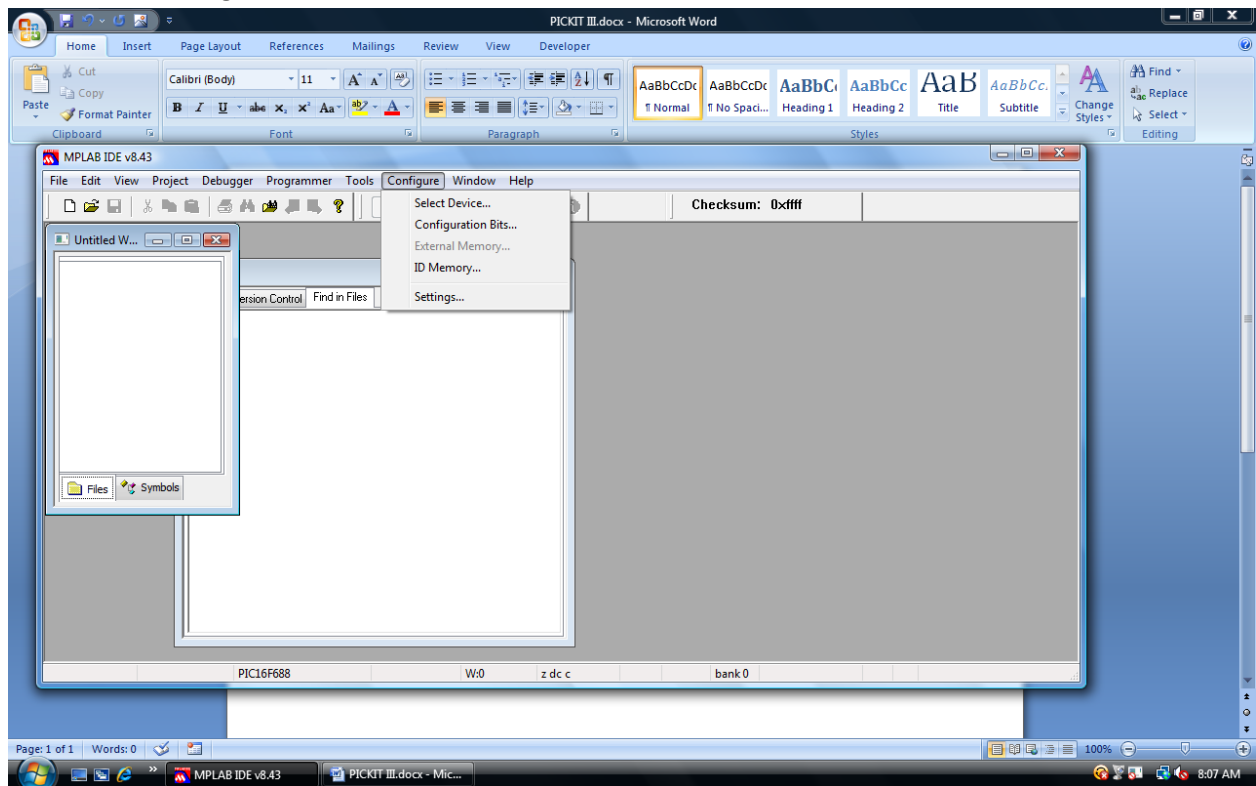


The following pages describe how to program the chip using the HEX file only. You should be able to use Waynes videos as a reference if you need to do the assembly.

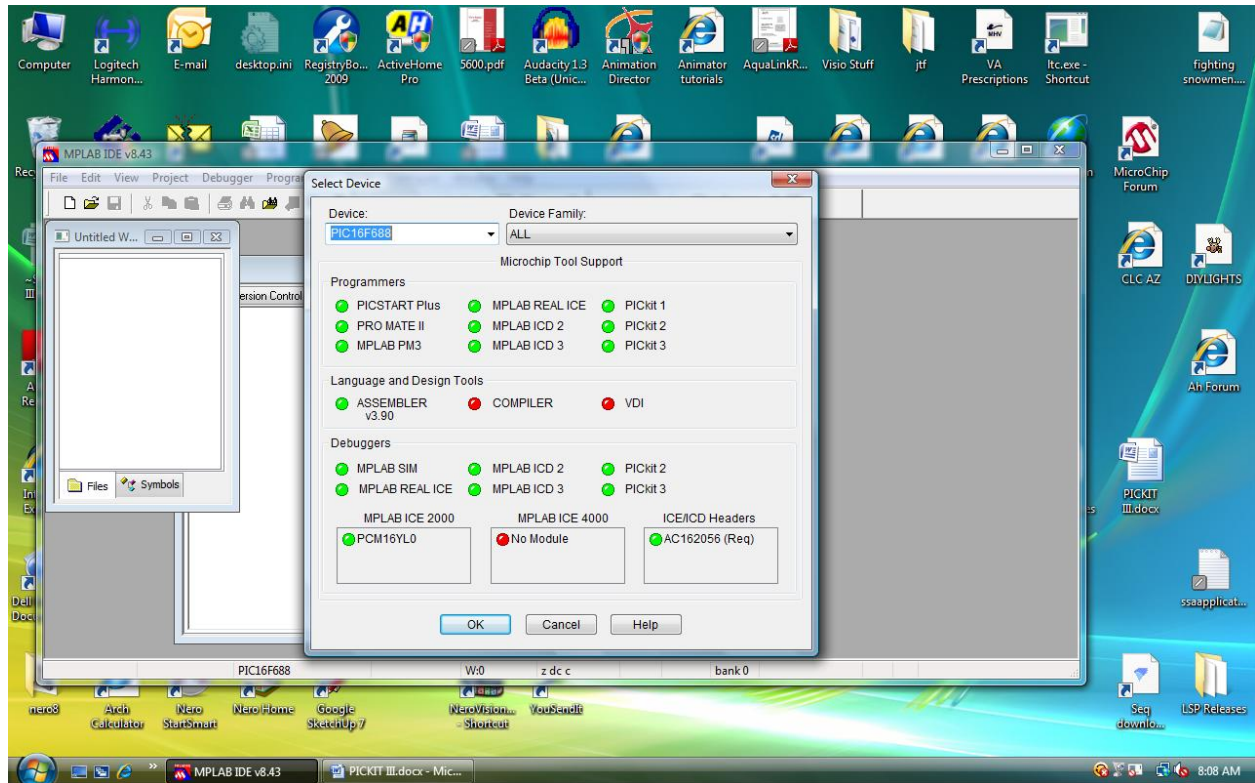
1. This is the screen you will see after opening MPLAB IDE v8.43



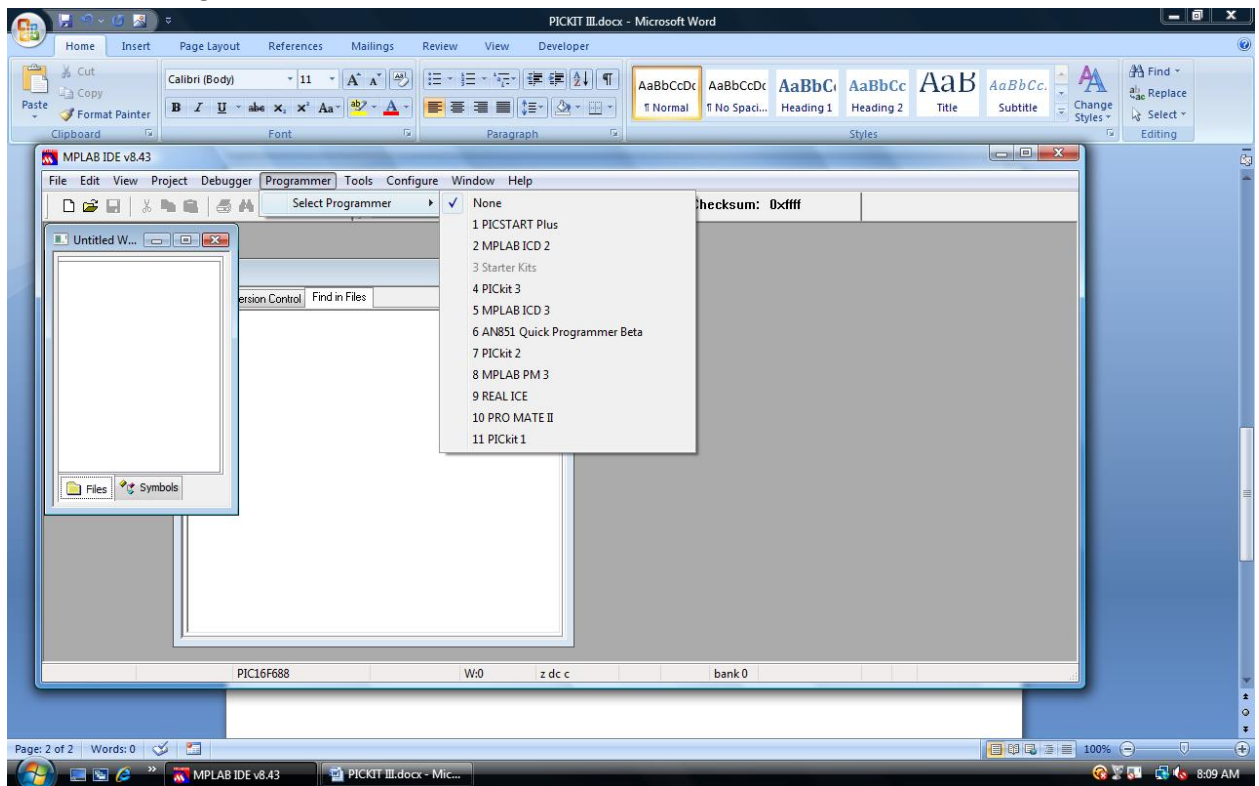
Choose the “Configure” menu item the “Select Device”



1. Choose the "PIC16F688" Chip in the device drop down

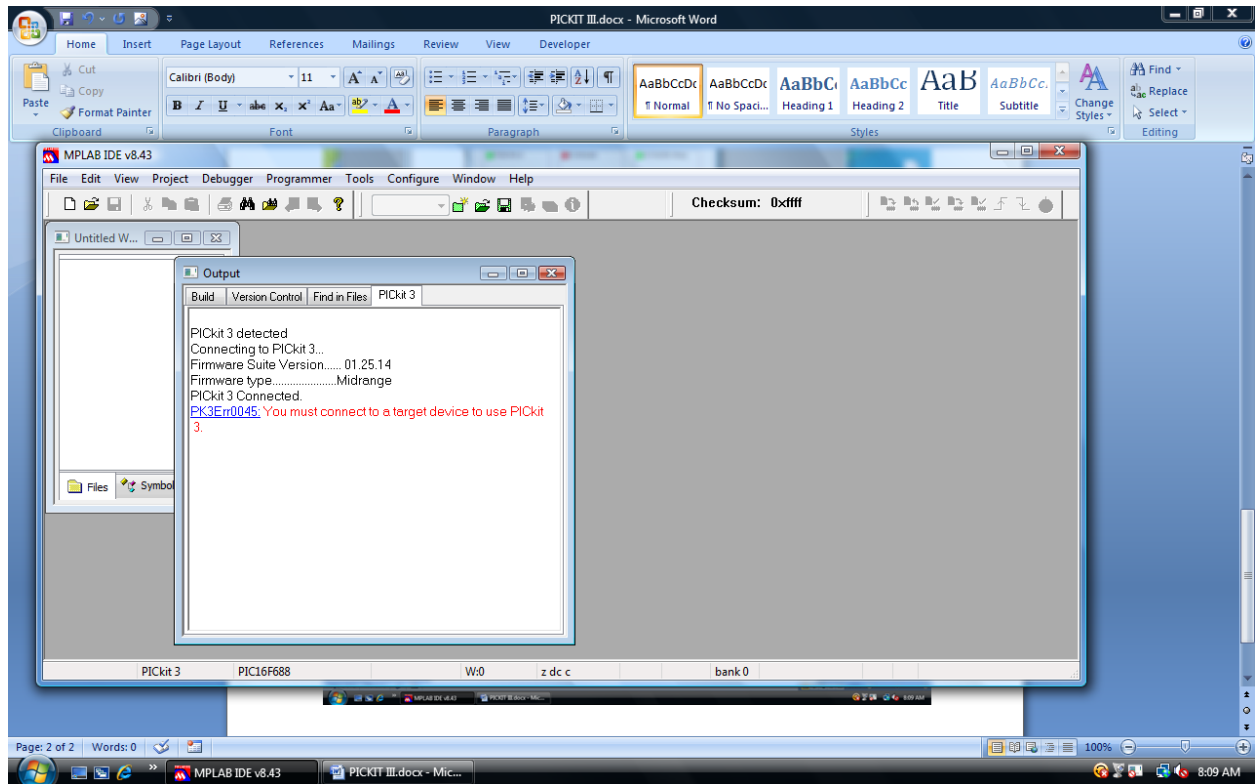


2. Choose the “Programmer” from the menu then choose “PICKit 3”

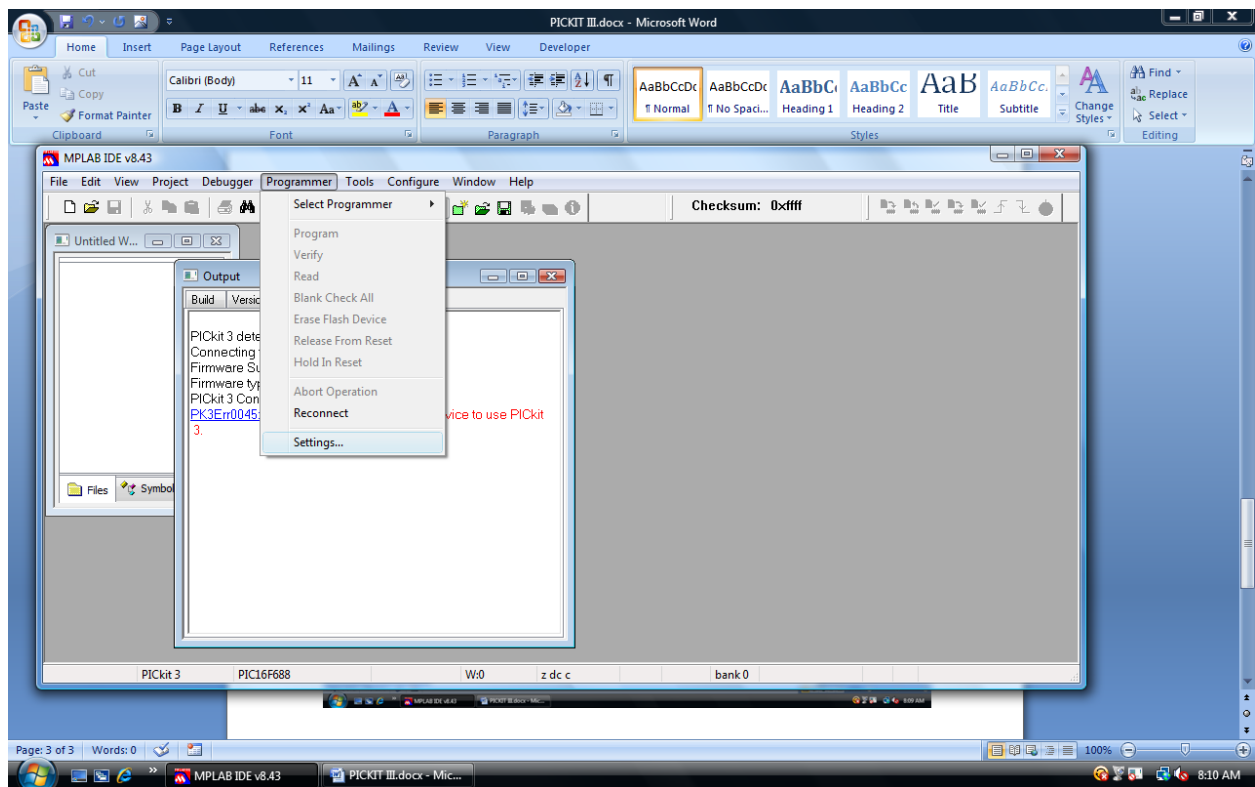




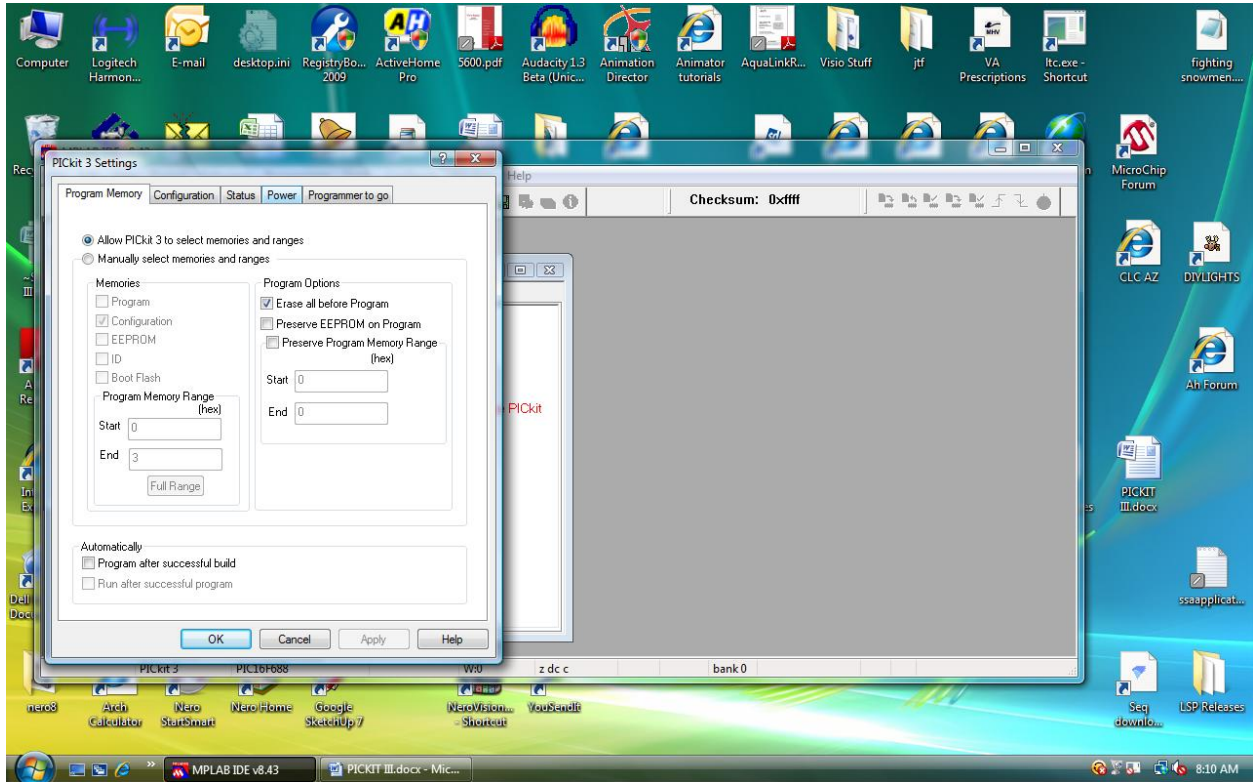
3. You will then get this screen indicating that a target device is not connected.



4. Choose “Programmer” from the menu and then “Settings”.

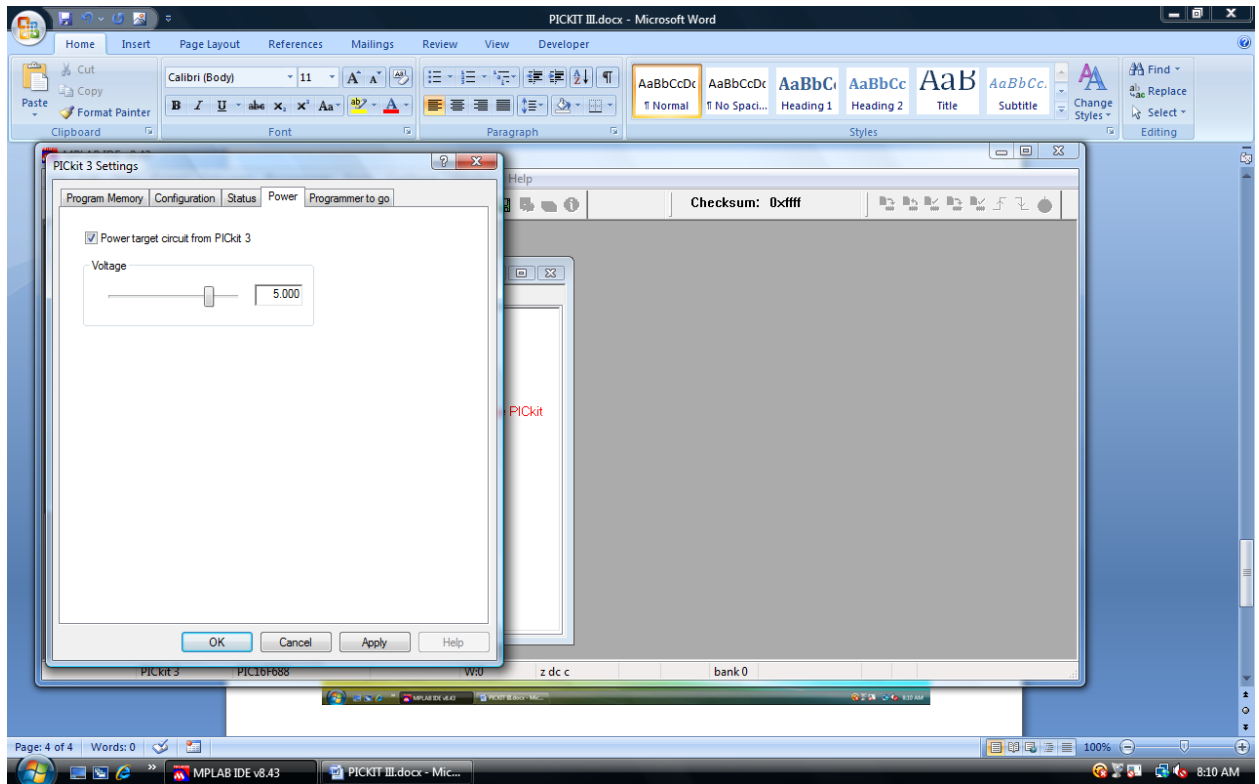


5. You will then get this screen. Choose the “Power” tab.

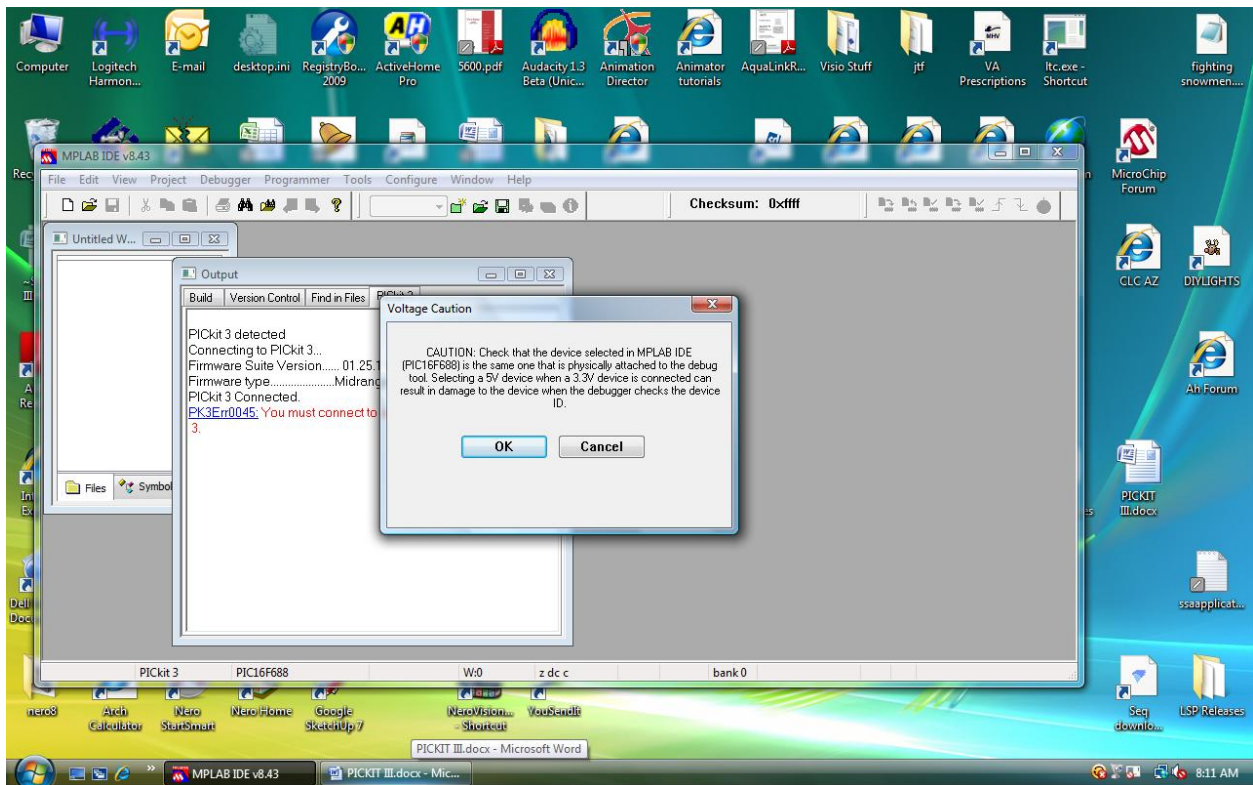




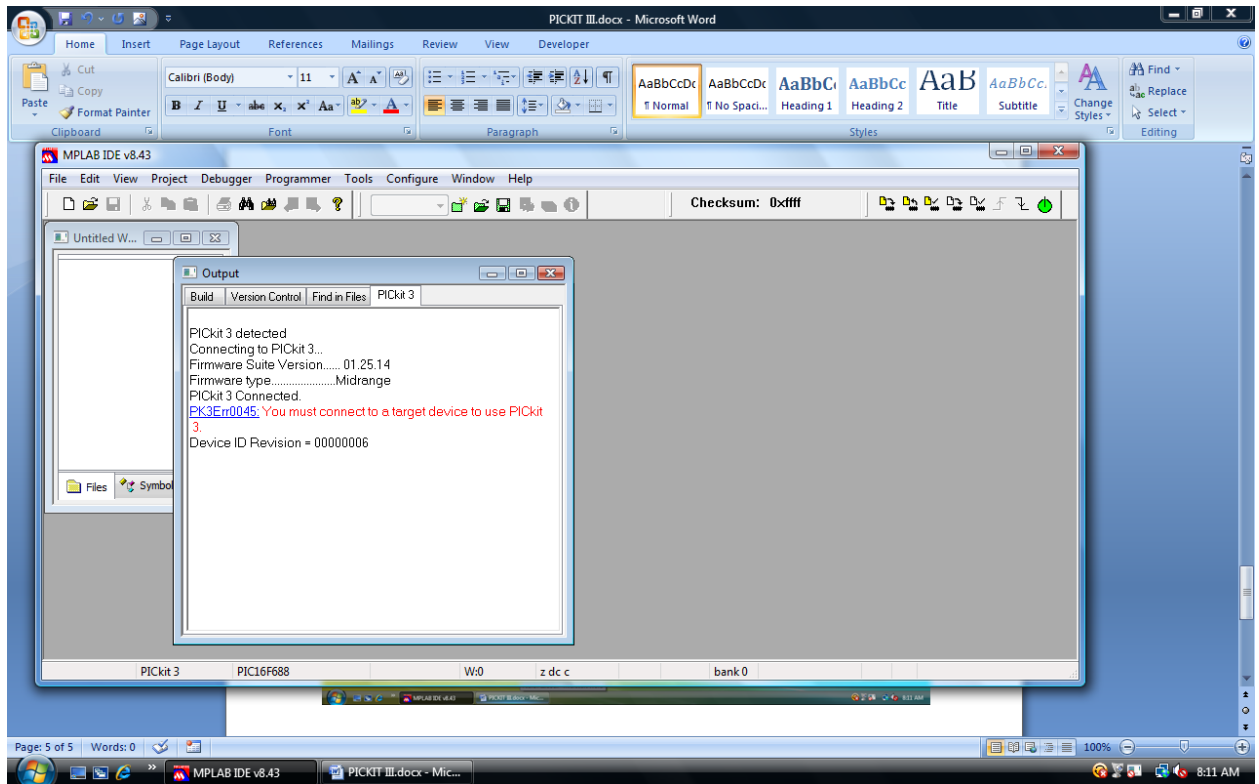
6. You will get this screen. Check the “Power target circuit from PICkit 3” box



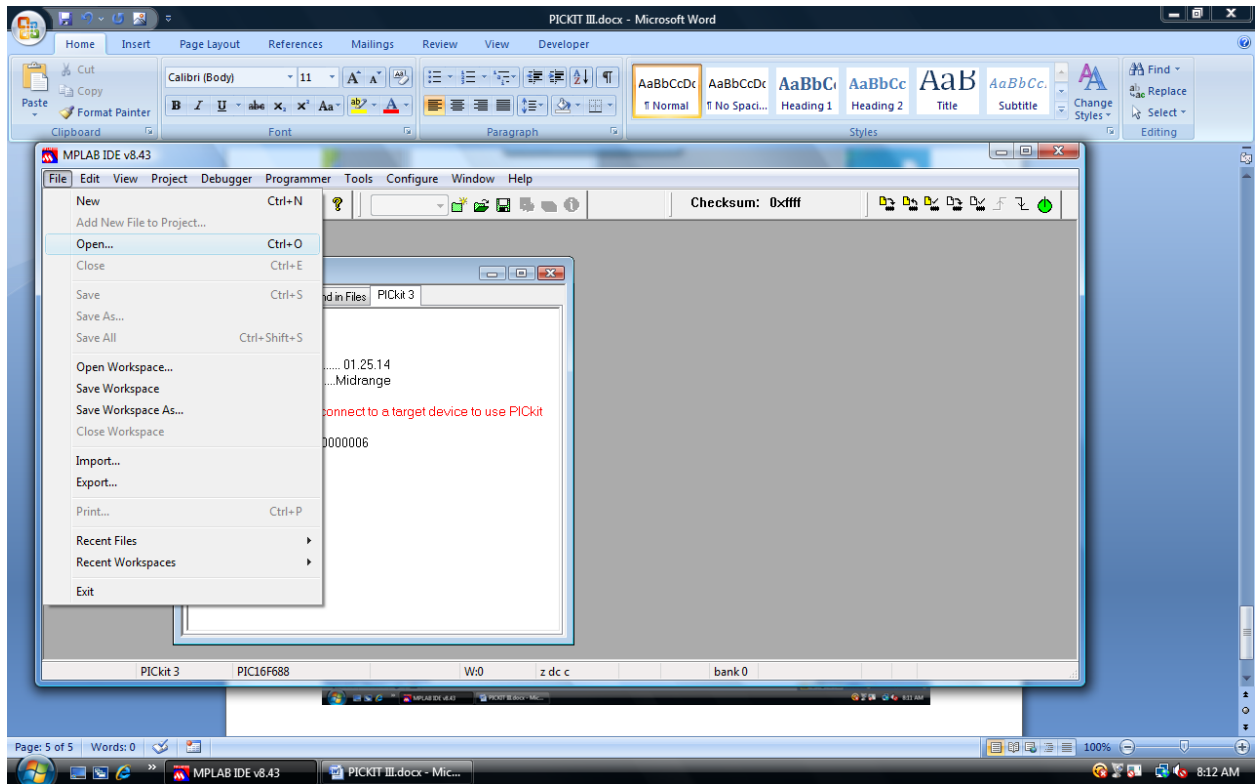
7. You will then get this screen. Just click “OK”



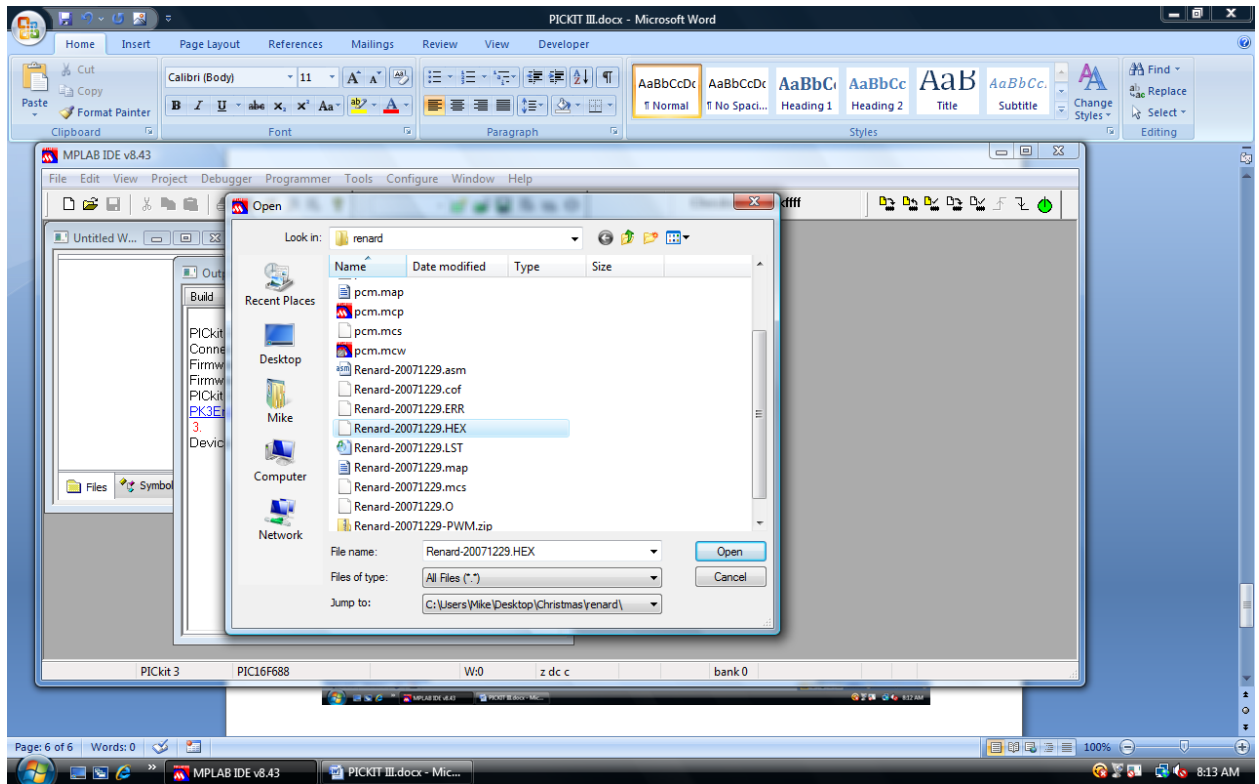
8. This Screen will then appear indicating that you have connected to the PIC16F688.



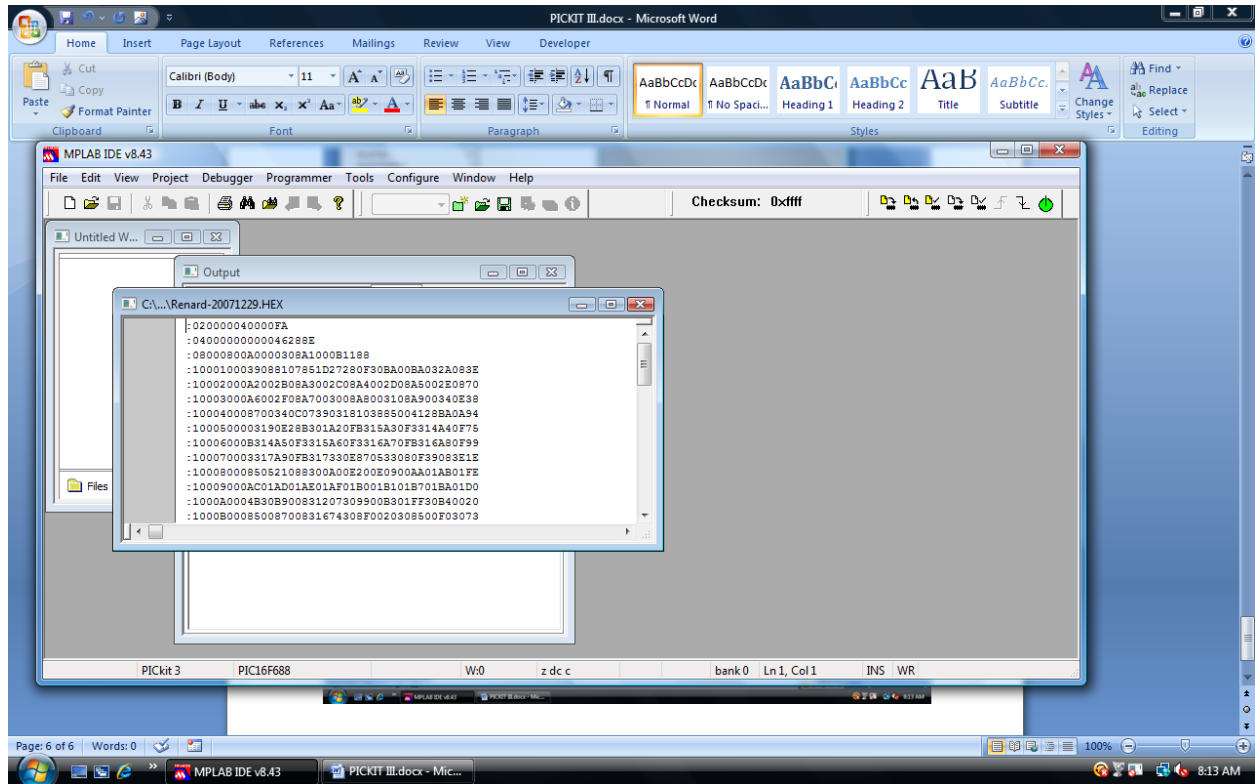
9. Select “File”, then “Import” from the menu.



10. Browse to the location that has the “HEX” file you want to load. Select that file then click “Open”



11. Minimize the window created for the “hex” file then hit the “program” icon. This is located to the right of the “Checksum:” in the menu bar.





12. You will then get this screen indicating that the chip was programmed and verified.

