



**TeleMetrix**



# Water flow measurement and monitoring Mauritius Island Water



# Electromagnetic flowmeter EPD série from FineTek



# Electromagnetic flow meter

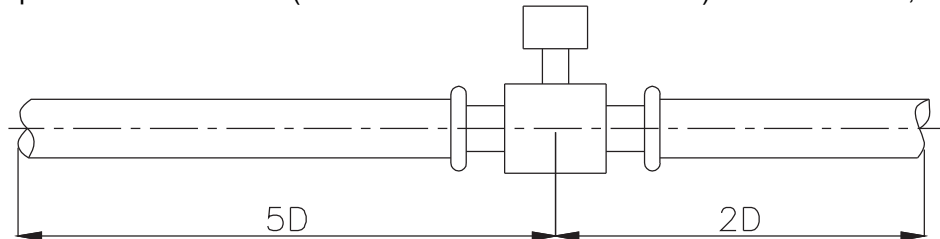
## EPD



- Widely applied in the conducting liquids that may contain fiber, solid granules and suspended materials
- The measurement results are not affected by the change in liquid density, viscosity, temperature, pressure and conductivity.
- Variety of options for Electrode material, lining material, pipe diameter, etc.
- **ISO17025 & OIML certified**

## Flow meter installation

Tube section is required to be at least 5D (internal diameter of the flow meter) on the front side, and at least 2D on the rear side.

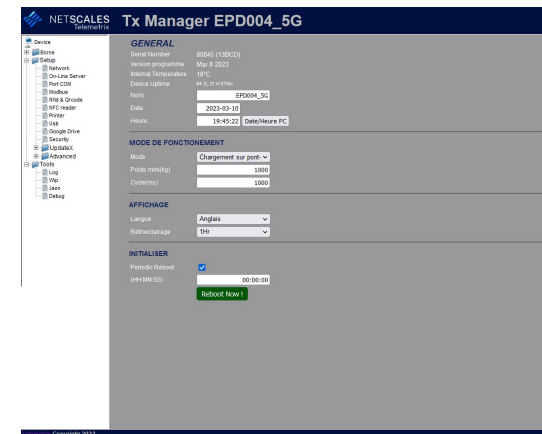


# Monitoring & On-line report

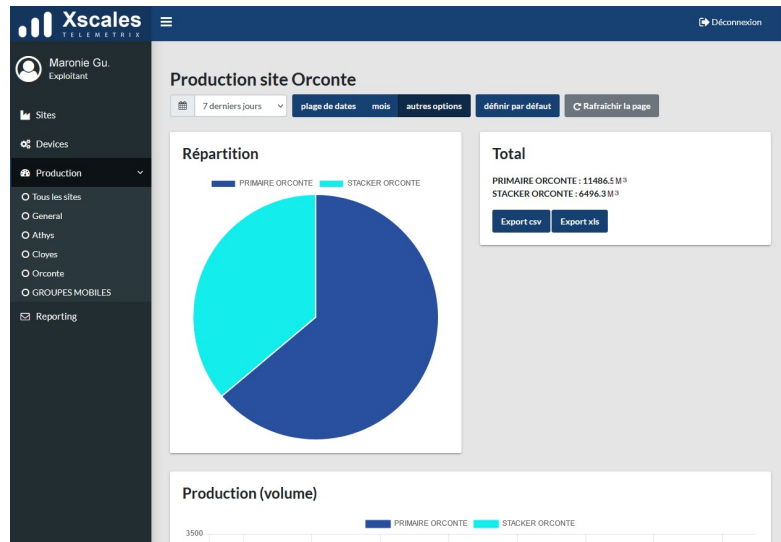


Monitoring your production remotely

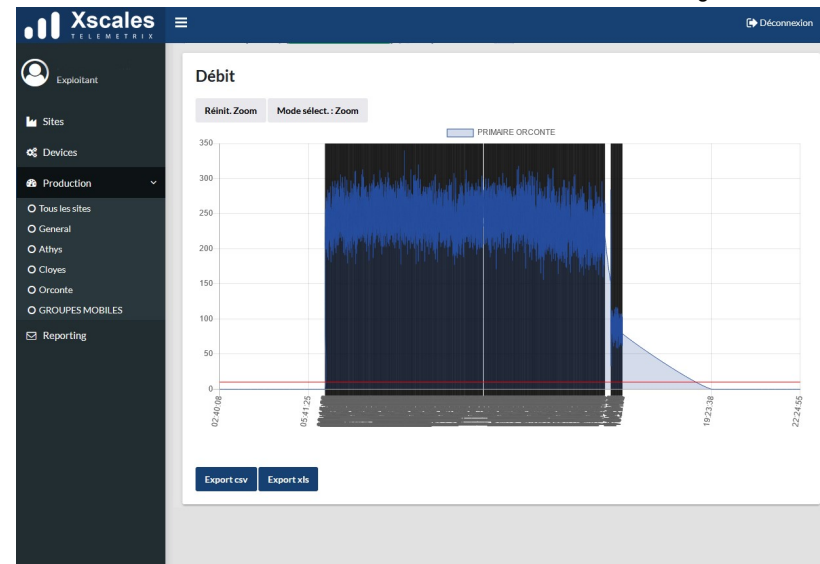
XSCALES is an online IOT software made by TeleMetrix. It collects your information from DIGIBOX systems installed on your sites and keeps them on a secure server by 4G or Ineternet connection. Your data is accessible at any time by simply connecting to our WEB portal with a computer or a phone.



Embedded web server for local diagnostic



On-Line Service for global view



# WATER FLOW LABORATORY FACILITY (LNE & TAF)



EPD Flowmeter



TxBox Industrial IOT



Flow Calibration: **ISO 17025**  
ILAC (International Laboratory Accreditation Cooperation)  
TAF 3086 (Taiwan Accreditation Foundation)



Le progrès, une passion à partager

**Etat Membre de l'OIML**  
*Member State of OIML*  
**FRANCE**

## **CERTIFICAT OIML DE CONFORMITE** *OIML CERTIFICATE OF CONFORMITY*

**N° R49/2013-FR2-17.01**



Accréditation n°5-0012  
Liste des sites accrédités  
et portée disponible sur  
[www.cofrac.fr](http://www.cofrac.fr)

OIML 16-V8-05-2013

**Autorité de délivrance**  
*Issuing authority*

: Laboratoire National de Métrologie et d'Essais  
Personne responsable (Person responsible) : Thomas LOMMATZSCH

**Demandeur**  
*Applicant*

: FINETEK CO LTD - No.16, Tzuchiang St., Tucheng Industrial  
TAIWAN, PROVINCE OF CHINA 236 NEW TAIPEI CITY

**Fabricant**  
*Manufacturer*

:

**Identification du type certifié**

: compteur d'eau électromagnétique FINETEK type EPD3X

*Identification of the certified pattern*

*electromagnetic water meter FINETEK type EPD3X*

**Caractéristiques**  
*Characteristics*

: voir annexe  
*see annex*

Ce certificat atteste la conformité du modèle mentionné ci-dessus (représenté par les échantillons identifiés dans les rapports d'essais associés) aux exigences de la Recommandation suivante de l'Organisation Internationale de Métrologie Légale – OIML) :

*This certificate attests the conformity of the above-mentioned pattern (represented by the samples identified in the associated test reports with the requirements of the following Recommendation of the International Organization of Legal Metrology – OIML) :*

**R49/2013**

# Successful Reference -1



1. Industry: Water Treatment
2. Customer: Engineering Company
3. Client: A10 Pressurization Station of Luzhu, Taoyuan City Taiwan
4. Waterworks Company
5. Measured object: tap water, pressure 1.5~3 Bar
6. Product model: EPD electromagnetic flowmeter Remote type dimension: 300mm, requires TAF certification, IP68
7. The key to successful:  
We have a complete certification report, and factory inspection process. But competitor' s products have signal instability, but do not deal with it; FineTek provide good service and there is a problem with the installation
8. Competing brand: EMS



# Electromagnetic flow meter



## Application

Model : EPD34 DN80 (remote type)

Industry: Pharmaceutical

Medium: Wastewater





# Successful Reference -2



1. Client: Guolun Engineering
2. Main Industry: Water Treatment
3. Measured object: tap water (drinking water)
4. Application environment: Monitoring of tap water pipelines of Luona Water Purification Plant in Xinyi Township
5. Main model: EPD34 Flow meter – Remote type
6. Competitors and models:

The key to success: the successful experience of cooperation in past cases, coupled with our company's familiarity with the verification process of tap water, we began to closely cooperate with tap water-related cases.

7. Bring benefits to customers: monitor the performance of water purification plants at any time
8. Supplementary instructions and remarks:  
Potential business opportunities: Cooperate with other follow-up water purification plant equipment update cases



# Successful Reference -3



1. Customer: District 4 of Taiwan Waterworks\_Shuili Operation Office
2. Main Industry: Water Treatment
3. Measured object: tap water (drinking water)
4. Application environment: Renlun water purification plant\_dosing station
5. Main model: EPD34200 Flow meter – Remote type
6. Competitors and Models: Replaces YOGOGAWA Electromagnetic Flowmeter
7. The key to success: good customer relationship maintenance and after-sales service (Xingang office crashes and traffic instability, working conditions are handled properly)
8. Benefits to customers: remote traffic monitoring
9. Potential business opportunities: Newly developed the fourth district of tap water, and there will be demand for Xiluo drug filling stations in the future



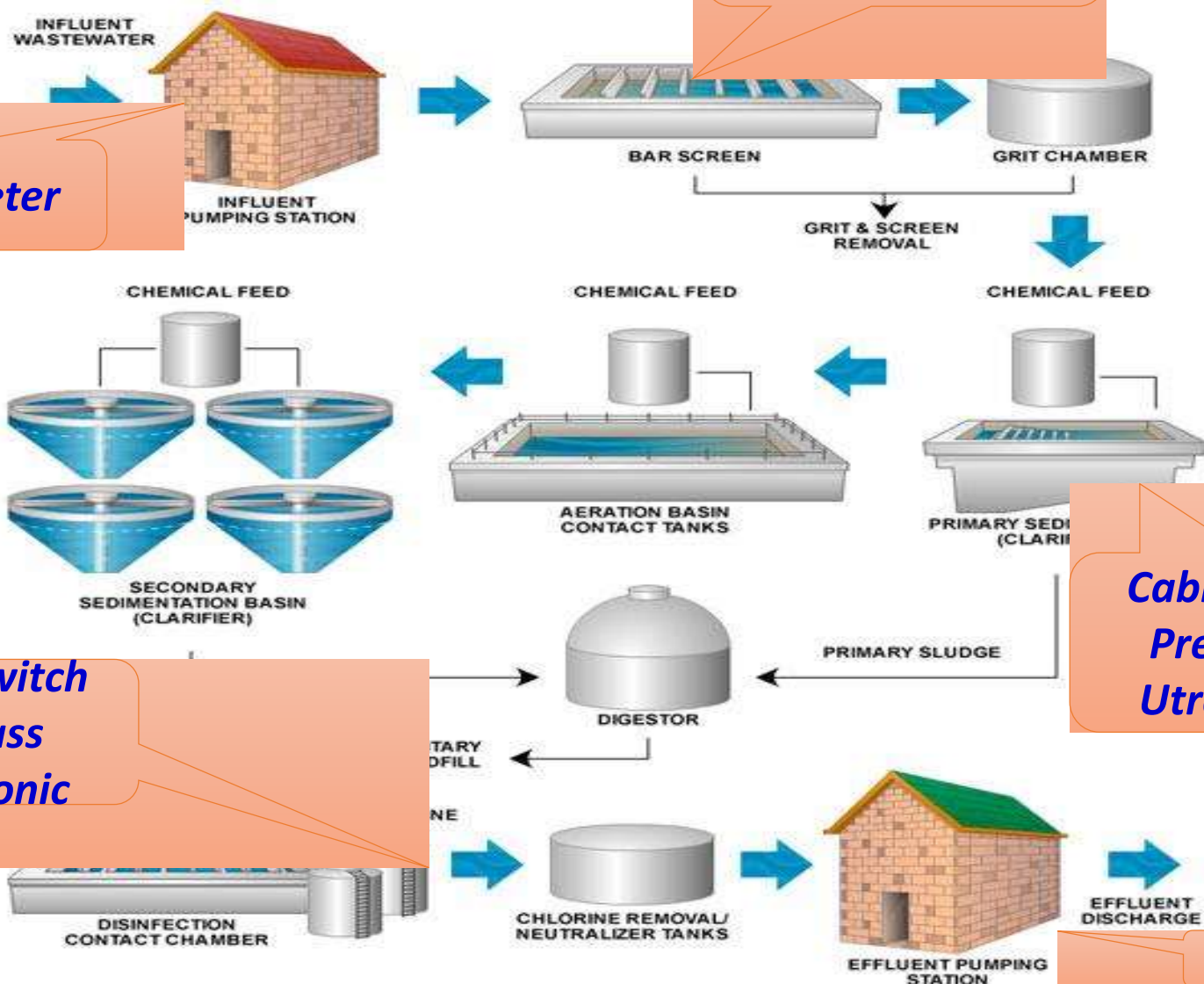


# Total Solution- Water treatment

We always consider what customer needs.



# Waste Water Flow Chart



*Ultrasonic or Radar level transmitter*

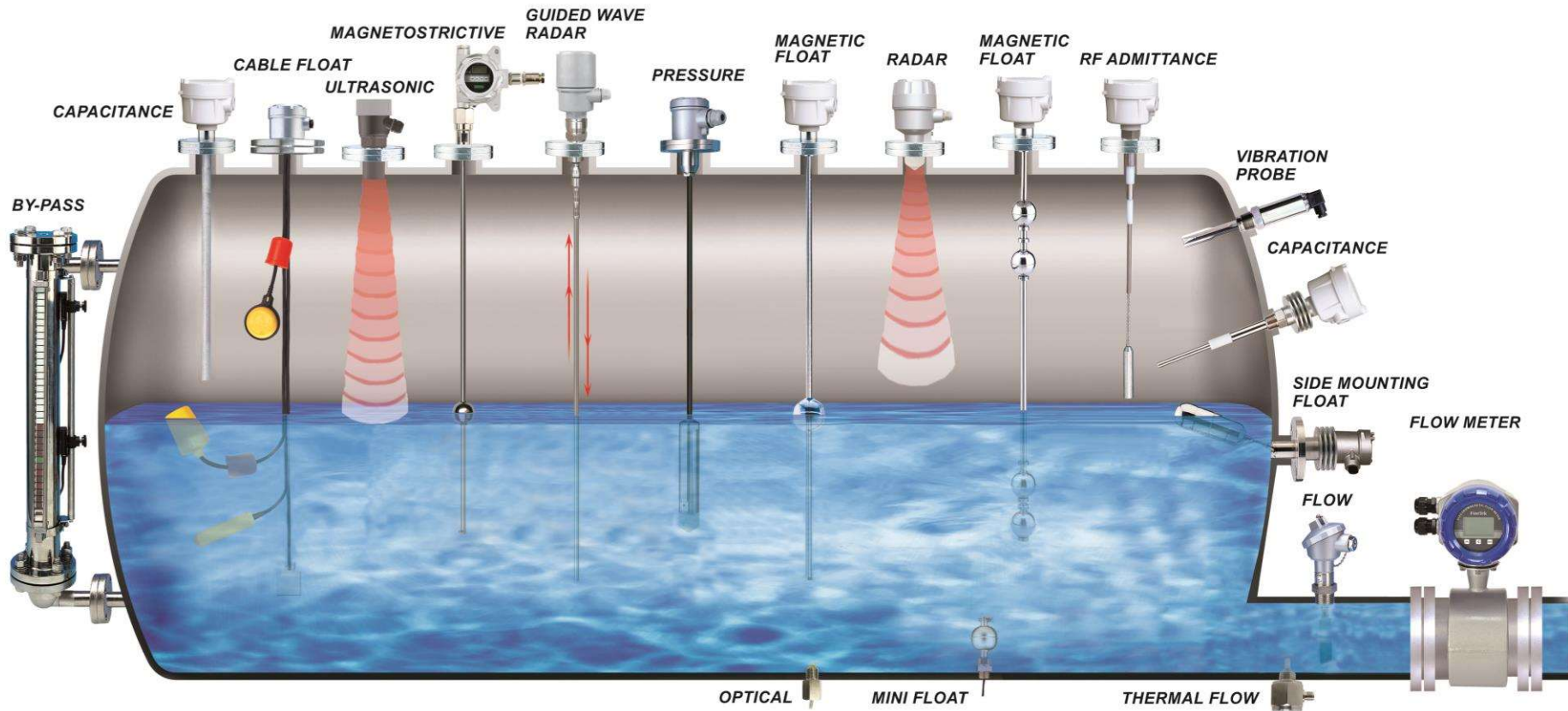
*Flowmeter*

*Cable float type  
Pressure type  
Ultrasonic type*

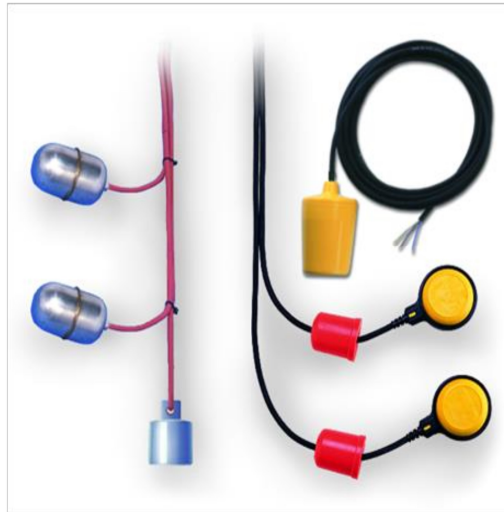
*Float switch  
By pass  
Ultrasonic*

*Flowmeter*

# Product Group- Liquid (19 types)



# Cable float level switch



FA/ FB



- Rugged mechanical design
- Float: PP, SUS 304, PVC
- Cable: Neoprene, PVC, Silicon
- Processing Temperature: PP: -10C~80 C; PVC: -10~60C; SUS 304: 0-170C
- Switch type: micro-switch, reed switch, mercury switch
- **Tank type:** water well
- **Medium:** Underground water
- **Pressure** ATM
- **Temp.:** Normal
- **Model:** FAC (Round type)
- **Type:** Micro switch/PP float
- **Functions:** Pump control (ON/OFF)
- **Remark:** Connect to the pump directly



# Dosing system

For Lime, Activate Carbone Storage and Mesurement



**Treatment:** Stabilize the PH value of aeration / chemical coagulation basin.

**Medium:**  $H_2SO_4$ /NaOH/NaOCl

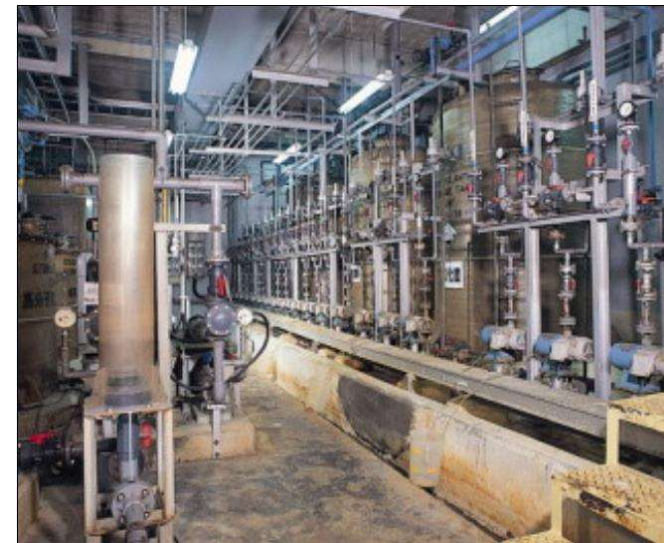
**Suitable product:** LOAD CELL / TMX110

Weight transmitter

Magnetic float level transmitter

Pressure transmitter

Magnetic float level switch



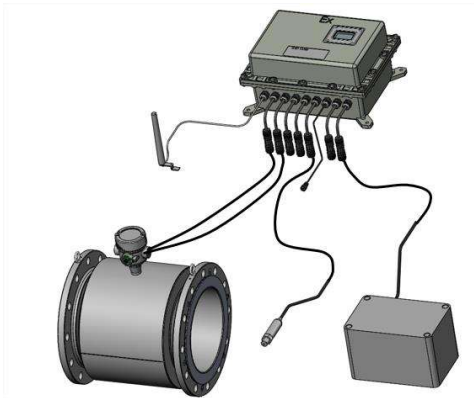
Embedded WEB server



# Product Applications of flow meter



1. Standard type & remote type
2. Power supply: 24VDC/ 110VAC/220VAC/ Battery type
3. DN25 ~DN300 mm
4. Accuracy : 0.2% / 0.3% / 0.5%
5. Remote type : max length of cable 100 meter
6. Electrode material: SUS316L, Hastelloy , titanium, Tatalum
7. Lining material: PTFE, NBR, Neoprene
8. Certificate : IAC 17025, OIML



# Electromagnetic flow meter

## Application

Model : EPD30 DN150

Industry: Hoggery

Medium: Wastewater

Make full pipe flow  
→ *Enhance the accuracy*



# Question & Answer



**SAS TELEMETRIX 7 Rue du Bois Malhais – 78640 Saint Germain-de-la-Grange - France**  
**Bernard Wenner Email : [b.wenner@telemetrix.fr](mailto:b.wenner@telemetrix.fr) wezbsite : <https://www.telemetrix.fr>**